

**TO  
LET**

£700 PCM

Wickham Road, Fareham, PO16 7SH



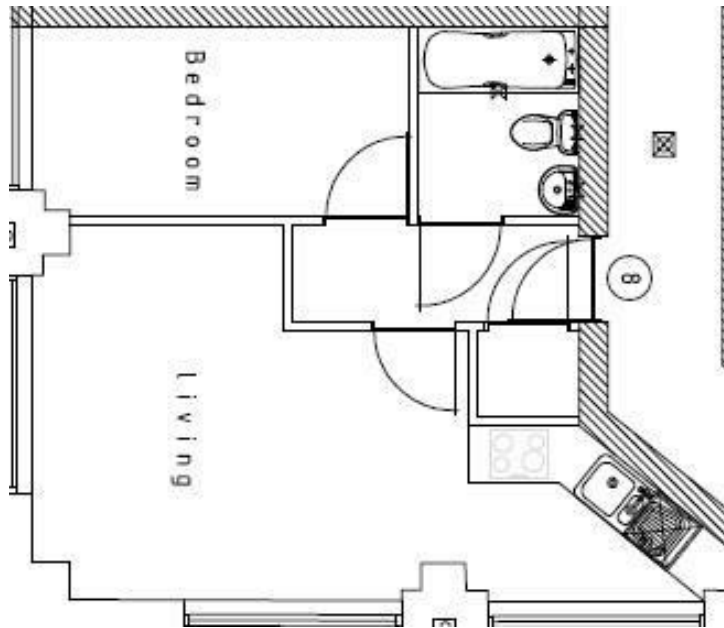
## HIGHLIGHTS

- ❖ MODERN DEVELOPMENT
- ❖ ALLOCATED PARKING
- ❖ PRIME LOCATION
- ❖ DOUBLE GLAZING
- ❖ CENTRAL HEATING
- ❖ LIFT IN BLOCK
- ❖ AVAILABLE NOW
- ❖ WASHING MACHINE INCLUDED
- ❖ FRIDGE INCLUDED
- ❖ A MUST VIEW

We are pleased to welcome this bright and airy one bedroom apartment to the lettings market. Converted in 2015.

The property comprises entrance hall, bathroom, open plan living room and kitchen and double bedroom. With the added benefits of allocated parking, central heating and double glazed windows, this property is bound to attract lots of attention. Call Bernards on 023 9223 2888 to book an internal viewing.

 1  1  1



Energy Efficiency Rating		
	Current	Potential
Very energy efficient - lower running costs		
(92 plus) <b>A</b>		
(81-91) <b>B</b>		
(69-80) <b>C</b>		
(55-68) <b>D</b>		
(39-54) <b>E</b>	52	52
(21-38) <b>F</b>		
(1-20) <b>G</b>		
Not energy efficient - higher running costs		
<b>England &amp; Wales</b> <small>EU Directive 2002/91/EC</small>		

